

This is an unofficial translation of “Elektrooniline Hasartmängu Aruandlus (EHMA) X-tee teenuste spetsifikatsioon“. In case of any difference in meaning the original Estonian text applies.

List of persons with restrictions on gambling (HAMPI)

Specification

Document history

Date	Version	Description	Author
28.07.2015	2.00	<p>Further development of the OMPI system. The document provides a description of the new logic of the system.</p> <p>The main differences of the new version from the old version:</p> <ul style="list-style-type: none"> - Starting from 1 January 2016, the list is expanded to include players of tolos and classical lottery. The scope of the system has expanded; therefore the new name of the system is the <i>List of persons with restrictions on gambling (HAMPI)</i>. - The restrictions registered after 1 January 2016 are not going to expire by default after the expiration of the term of the restriction. - There is a new data structure at the input and output of X-Road data communication services. 	ETCB, IT Centre of the Ministry of Finance,
07.10.2015	2.01	7.2 updated with information about buffering logic of MTA server. Addition of buffering lead to the removal of one validation rule (7.2.1).	IT Centre of the Ministry of Finance
1.11.2016	2.02	Renewed xml examples due to the x-road new version (version 6).	IT Centre of the Ministry of Finance
<u>21.06.2019</u>	<u>2.03</u>	<u>HAMPI data buffer update changes (previously 4 times a day and now in every 10 minutes)</u>	<u>IT Centre of the Ministry of Finance</u>

Table of Contents

1	Abbreviations and definitions	4
2	Stakeholders and their roles.....	4
3	Introduction.....	56
4	Application of ISKE and liabilities of the parties	78
4.1	Reliability (availability)	78
4.2	Data integrity.....	78
4.3	Confidentiality	78
5	HAMPI architecture, opening and testing the services	940
5.1	HAMPI architecture	940
5.2	Opening and testing the services	1044
6	Accepting the application for setting a restriction by the operator	1142
7	Verification of restrictions by the operator	1243
7.1	Verifying restrictions via the e-Tax Board.....	1344
7.2	Verifying restrictions via the X-Road data communication services.....	1445
7.2.1	Single query (X-Road data communication service emta.OmpiKontrollV2.v1)	1546
7.2.2	Mass query (X-Road data communication service emta.OmpiAndmedV2.v1)	2522

1 Abbreviations and definitions

Abbreviation	Description
GA	Gambling Act. The legal basis for the list of the people with restrictions on gambling is section 39.
Regulation	The regulation the <i>Establishment of the List of Persons with Restrictions on Gambling and Approval of Statutes</i> , adopted by the Minister of Finance. Supplements section 39 of the Gambling Act. Amendments shall come into effect on 1 January 2016.
OMPI	List of persons with restrictions on playing games of chance. In application until 31 December 2015.
HAMPI	List of persons with restrictions on gambling. Further development of the OMPI system. In application since 1 January 2016.
List	Both OMPI and HAMPI lists.
e-Tax Board	E-Tax Board e-Customs is the <i>online</i> portal of the Estonian Tax and Customs Board.
X-Road	The X-Road data exchange layer in the state information systems is a technical and organisational environment, which allows its users to hold safe web-based data exchange between different state information systems. X-Road allows the institutions/people to exchange data safely as well as to provide the access to authorized people to the data stored and processed in the databases. Machine-to-machine data exchange takes place through X-Road.
X-Road data communication service	As a rule, data communication services are the specific services developed for each database uniquely, and the purpose of X-Road is to provide access to such services through information systems. The output and input of data communication services are described in the description of relevant databases. <i>Source: RIA.</i> The present document covers the following data communication services: <ul style="list-style-type: none"> • emta.ompKontroll.v1 (in application until 01.01.2016) • emta.OmpiKontrollV2.v1 (in application since 01.01.2016) • emta.OmpiAndmed.v1 (in application until 01.01.2016) • emta.OmpiAndmedV2.v1 (in application since 01.01.2016)
X-Road meta-service	Meta-services are auxiliary services which help to derive the information for executing data communication services. The input, output, and semantics of meta-services are standardized, described in RIA Guidelines and are similar in form in all of the servers providing meta-services. <i>Source: RIA.</i> The present document does not describe meta-services, although it might be possible that they are required for providing the proper functioning of the system of the operator.
ISKE	ISKE is a three-stage baseline security system for information systems. The purpose of the ISKE application is to provide the safety of the data processed in the information systems at the sufficient level.

2 Stakeholders and their roles

Stakeholder	Description
Operator of gambling activities	A legal entity which has a permit for organizing gambling activities issued by the Estonian Tax and Customs Board. The main target group of the present document.
A person registered in Estonia or abroad; a gambler	User of the services provided by the operator of gambling activities. Can set for himself / herself restrictions on visiting the places where gambling activities are held or restrictions on gambling.
Authorized employee	An employee assigned by the operator of gambling activities, whose duty is to carry out the activities related to the list. In case of an automated process a system can act as an "authorized employee".
Estonian Tax and Customs Board (MTA)	Estonian Tax and Customs Board A processor responsible for the OMPI / HAMPI lists. Carries out supervision over the abidance by the Gambling Act.
AKI	Data Protection Inspectorate Carries out supervision over using the data.
IT Centre, Ministry of Finance, Estonia (RMIT)	Information Technology Centre for the Ministry of Finance. Provides information technology services to the Estonian Tax and Customs Board.
RIA	Information System Authority. Responsible for the proper functioning of the X-Road data exchange layer.

3 Introduction

The initial list was made on the basis of the regulation titled *Establishment of the List of Persons with Restrictions on Games of Chance and Approval of Statutes*, adopted by the Minister of Finance. The initial regulation entered into force on 15 February 2010. The initial version of the regulation was only valid for the games of chance.

The need for introducing changes in the principles of the functioning of the list arises from section 39 of the Gambling Act that will come into effect on 1 January 2016 and from the regulation of the Minister of Finance *Establishment of the List of Persons with Restrictions on Gambling and Approval of Statutes*. The new act that will come into effect on 1 January 2016 will expand the principle of functioning of the list of persons with restrictions and will also cover tolos and classical lottery. People will be able to choose what kind of gambling activity they wish to set restrictions for. The restrictions do not cover instant lottery (for example, scratch cards).

In Estonia, both the citizens of Estonia and the citizens of foreign countries can set restrictions for themselves. An application can be submitted:

- 1) via e-Tax Board;
- 2) on paper in the office of the Estonian Tax and Customs Board;
- 3) in the place where games of chance or tolos are held (the operator of gambling activities shall forward the application to the Estonian Tax and Customs Board). If the application is forwarded through the operator of gambling activities, the data of the operator of gambling activities should be indicated in the application (data of the operator will not be saved in the Estonian Tax and Customs Board database);
- 4) by e-mail with a digital signature to the following address hasart@emta.ee

The application for deleting a person's name from the list can be submitted:

- 1) via e-Tax Board;
- 2) on paper in the office of the Estonian Tax and Customs Board;
- 3) by e-mail with a digital signature to the following address hasart@emta.ee

The application forms are available on the website of the Estonian Tax and Customs Board <http://www.emta.ee/>.

Another important effect of introducing changes into the Act is that the principles of entry into and deletion from the list will be changed.

Before 1 January 2016, a person was entered into the list on the basis of the written application for the period from six months to three years. After the expiration of the term specified in the application, the person's data is deleted from the list.

Starting from 1 January 2016, a person's data will be entered into the HAMPI list on the basis of the written application for an unlimited period of time. A term will be specified in the application, after the expiration of which a person will be able to file another application for being deleted from the list. The term starts from the date when the application is submitted and must not be shorter than six months or longer than three years. A person shall be

entered into the list and deleted from the list within 2 working days after submitting the application at the office of the Estonian Tax and Customs Board or sending it by e-mail at hasart@emta.ee starting from the date of submission of the application. The HAMPI application filed through the e-Tax Board comes into effect immediately. If a person submits the application on 31 December 2015, regardless of the fact that the application is registered in the system within 2 working days, the former restriction rules shall apply to such restriction (proceeding from the regulation).

The submission of the application shall be regarded as a person's consent for the processing of his/her personal data by the Estonian Tax and Customs Board and the operator of gambling activities. The application that has been submitted cannot be changed or withdrawn. The operator undertakes not to permit the person that has been entered into the HAMPI list to gamble.

The purpose of the list and its aim are to provide people with the possibility to set restrictions for themselves on visiting the places where gambling activities are held or on gambling in order to reduce negative social and economic consequences that can accompany gambling.

4 Application of ISKE and liabilities of the parties

The Estonian Tax and Customs Board as well as the operators of gambling activities must take organisational, physical, and IT safety measures which should provide the conformity of the system to ISKE safety class K2T2S2 (subsection 7 (3) of the regulation).

4.1 Reliability (availability)

The Estonian Tax and Customs Board shall provide that the system conforms to K2 level (reliability 99%, the acceptable accumulated downtime is 2 hours per week) if the operator's business and technical processes involve at least two services of the Estonian Tax and Customs Board.

If the operator's processes depend on only one service of the Estonian Tax and Customs Board, the operator shall assume the commercial risk that the reliability of the system can drop to K1 level (reliability 90%, the acceptable accumulated downtime is one day per week).

Reliability	Single query in the X-Road	Mass query in the X-Road	e-Tax Board application	Remarks
K1	+	-	-	
K1	-	+	-	Mass query must be performed at least once a day, preferably two times a day.
K1	-	-	+	
K2	+	+	+	
K2	+	+	-	Mass query must be performed at least once a day, preferably two times a day.
K2	+	-	+	
K2	-	+	+	Mass query must be performed at least once a day, preferably two times a day.

Table 1 Interdependence between the general reliability of the system and the services provided by the Estonian Tax and Customs Board consumed by the operator

4.2 Data integrity

The Estonian Tax and Customs Board is responsible for the integrity of initial data. The operator is responsible for the integrity of the data copied and saved in the database of the operator.

4.3 Confidentiality

The data contained in the list are sensitive personal data within the meaning of the Personal Data Protection Act (clause 4 (2) 3) of the Personal Data Protection Act). Pursuant to the regulation, an authority that is responsible and authorized for processing the list is the Estonian Tax and Customs Board. Both the Estonian Tax and Customs Board and the operator, who requests the data and uses them, are responsible for providing the confidentiality of the data.

The Estonian Tax and Customs Board shall provide the operator of gambling activities with the access to the data contained in the list under the following terms and conditions:

1. It is forbidden to forward the data to third parties or to provide access to the list to third parties.
2. The Estonian Tax and Customs Board has the right to close the access to the data contained in the list and impose other sanctions if the operator of gambling activities violates confidentiality through his/her activities or inactivity.
3. When replicating the list (X-Road data communication service emta.OmpiAndmedV2.v1), the operator of gambling activities becomes an authorized processor of the list (section 16 (2) of the regulation). Pursuant to the Public Information Act (subsection 43⁴ (3) of the Public Information Act), an authorised processor is required to comply with the instructions of the chief processor in the processing of data and housing of the database, and shall ensure the security of the database. In addition to that, the operator has to meet the requirements specified in section 25 of the Personal Data Protection Act.
4. It should be possible to enquire in the system of the operator only about the data from the list concerning one single person, and there should be no possibility to see the whole list or a selection of it on the basis of some attribute. The operator must make sure that the query submitted in order to verify the existence of the restriction is purposeful and is only available for the employees who have to do that in order to complete their job tasks.
5. All of the queries made about the existence of restrictions in the system of the operator must have log entries, which will help afterwards to ascertain when and by whom the queries were made.
6. The Data Protection Inspectorate has the right to check the purposefulness of the use of sensitive personal data. The Estonian Tax and Customs Board has the right to order the audit of the application of ISKE.

5 HAMPI architecture, accessing and testing the services

5.1 HAMPI architecture

A figure representing the list of persons with restrictions on gambling:

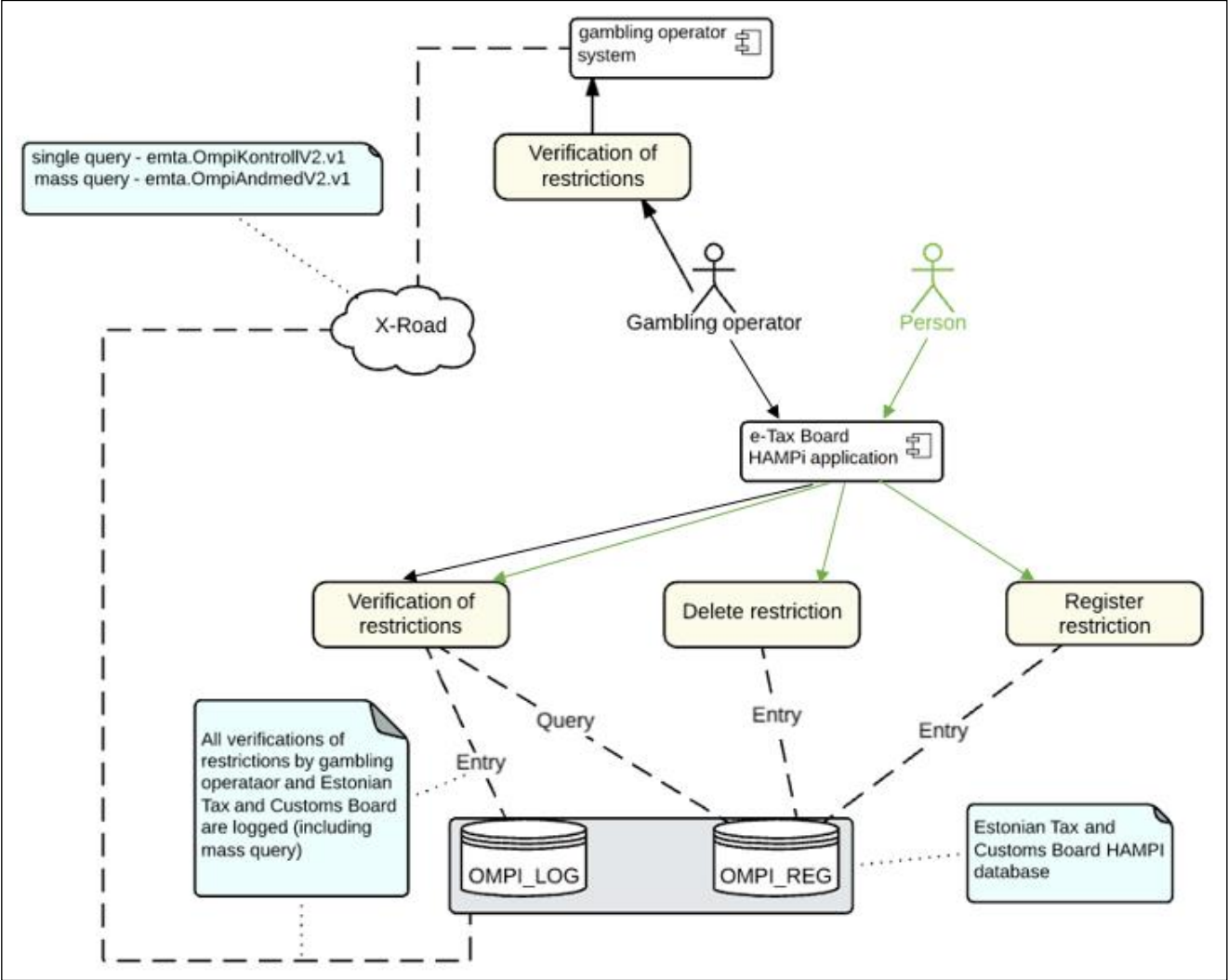


Figure 1. Architecture of the list of persons with restrictions on gambling

In order to check the existence of restriction via the X-Road data communication services, the operator has to integrate his/her information system into the X-Road data exchange layer. The integration is accompanied by the installation, setting, and certification of the software and hardware described on [RIA webpage](#).

When developing the information system of the operator, one should proceed from RIA document [REQUIREMENTS FOR INFORMATION SYSTEMS AND ADAPTER SERVERS \(LEGACY\) - https://www.ria.ee/ee/x-tee-juhendid.html](https://www.ria.ee/ee/x-tee-juhendid.html) During 2016, the services of the Estonian Tax and Customs Board will be transitioned to the X-Road version 6, in the result of which the structure of the header of the messages will change. **The changes in the HAMPI**

~~act will come into effect before the transfer, which means that in between, the old header structure should be used.~~ Detailed information about the transition to the X-Road version 6 is available at ~~<https://www.ria.ee/xtee-v6-kasutuselevott>~~ <https://www.ria.ee/ee/x-tee-liitumine.html>

NB! The questions about the X-Road software and hardware should be sent to RIA (help@ria.ee).

5.2 Accessing and testing the services

Testing the X-Road data communication services will take place in the X-Road development environment. Because of the changes in X-Road version (update to v6) it is necessary for the operator to register a subsystem, Estonian Tax and Customs Board cannot give permissions to use the services when the subsystem is missing. Testing can start without the operating permit. In order to open the services, the operator will register a subsystem and turn to the Estonian Tax and Customs Board with a request to open emta.OmpiKontrollV2.v1, emta.OmpiAndmedV2.v1 or both.

The access to the X-Road product environment is opened after the operator has obtained the operating permit and has made sure that the services are functioning properly in the development environment.

6 Accepting the application for setting a restriction by the operator

Pursuant to subsection 11 (1) 2) of the regulation, a gambler can submit an application for being entered into the list also in the place where games of chance or tolos are held.

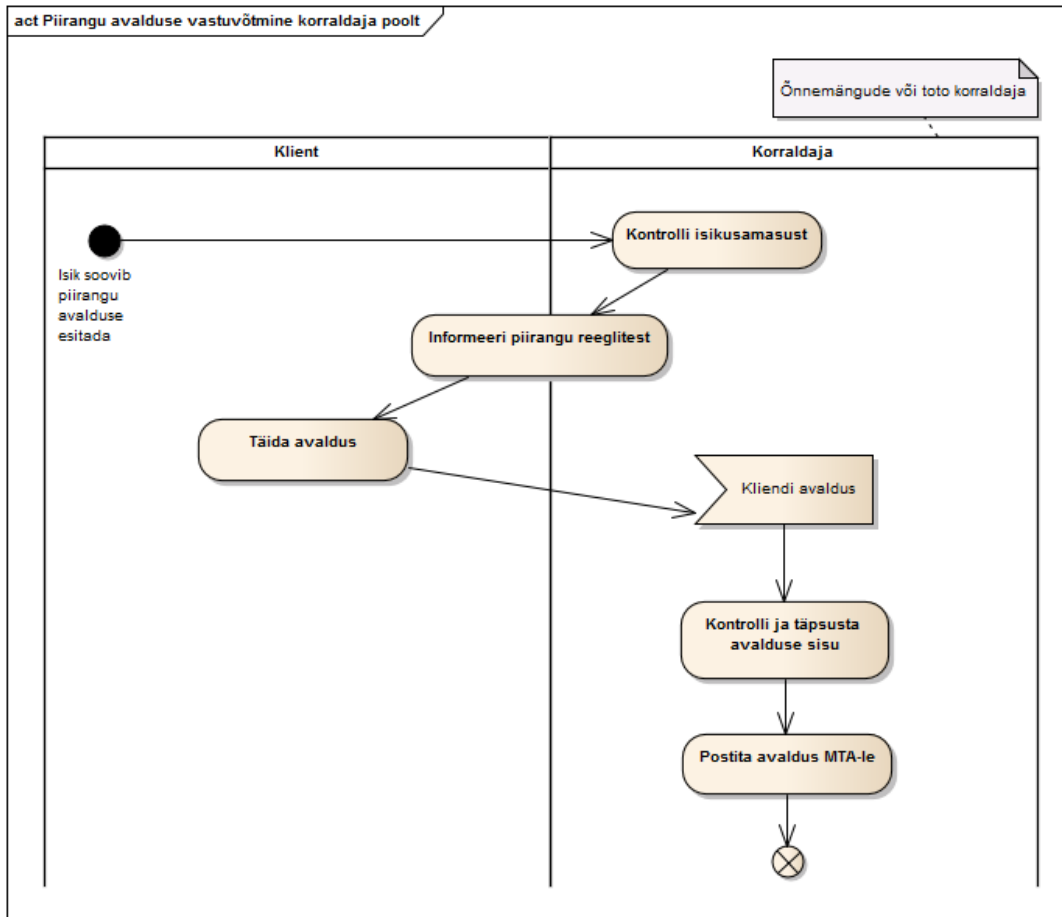


Figure 2. Accepting the application for setting a restriction by the operator

Accepting the application for setting a restriction by the operator, process description:

1. If a person wants to add a restriction, an employee authorized by the operator shall establish his/her identity, inform the person about the rules for setting the restrictions, and ask the person to fill in a relevant application (application forms are available at [the webpage of the Estonian Tax and Customs Board](#)). An employee authorized by the operator accepts the application.
2. The employee authorized by the operator verifies and specifies the content of the application in order to make sure that it has been filled in correctly and the copy of the document is attached.
3. The employee authorized by the operator submits the copy of the application to the e-mail address of the Estonian Tax and Customs Board at hasart@emta.ee. An original copy of the application together with the documents listed in subsection 11 (2) of the regulation shall be submitted to the Estonian Tax and Customs Board at the earliest possible opportunity by mail.

4. The Estonian Tax and Customs Board shall enter the person into the list within 2 working days after the application has been submitted or after the copy of the application has been sent to hasart@emta.ee.

NB! It is not possible to submit an application for the deletion from the list in the place where gambling activities are held.

7 Verification of restrictions by the operator

Operator of gambling activities has three means for verifying restrictions:

- via HAMPI application at the e-Tax Board.
- Via the X-Road data exchange services:
 - single query:
 - service emta.ompKontroll.v1 (until 01.01.2016)
 - service emta.OmpiKontrollV2.v1 (after 01.01.2016)
 - downloading the list by means of mass query, saving the list in the system of the operator and verifying the restrictions against his/her own system:
 - service emta.OmpiAndmed.v1 (until 01.01.2016)
 - service emta.OmpiAndmedV2.v1 (after 01.01.2016)

Due to the changes in legislation, the logic of submitting the queries is also going to change. The changes are as follows:

- From 1 January 2016, the system of the Estonian Tax and Customs Board is going to check what kind of valid operating permits the entity that submits a query holds and will only show those restrictions on gambling that the entity submitting a query is entitled to see. Example: if the operator only deals with lotteries, it does not see restrictions set on totos or games of chance (single query output: 0).
- The logic of cancelling the restriction is going to change, i.e. the restrictions on games of chance that were registered before 1 January 2016 expire by default after their term has expired. The persons with restrictions registered after 1 January 2016 are not deleted from the list after the expiry of the term specified in the application by default, but after the submission of the relevant application. It is only possible to delete the person from the list if the term specified in the application has expired. The operator of gambling activities does not have the right to delete the person from the list.
- The data structure of the inputs and outputs of the X-Road data communication services is going to change. The new structure is described in chapter 7.2.

7.1 Verifying restrictions via the e-Tax Board

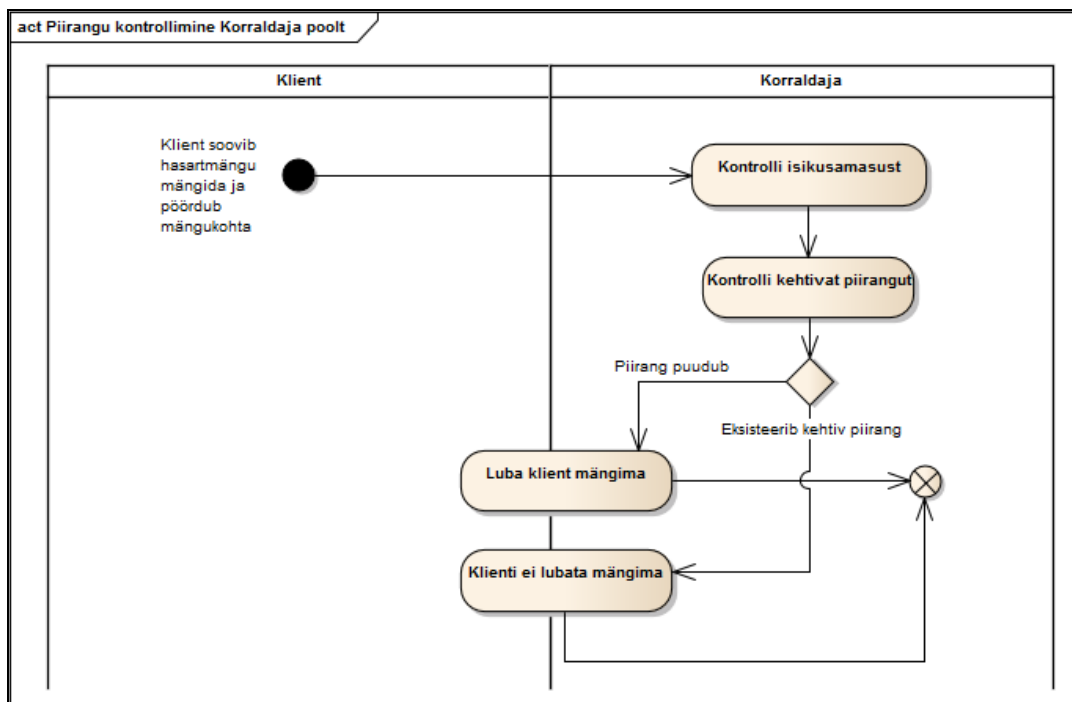


Figure 3. Verification of restrictions by the operator

Starting from 1 January 2016, in addition to the existing X-Road data communication services, the operators will have the possibility to verify the existence of restrictions on gambling at the e-Tax Board. The operators will only see the data about those restrictions, for which they are entitled to.

Verification of restrictions via the e-Tax Board, process description:

1. An authorized employee enters the e-Tax Board and chooses the role of a business customer. In order to use the HAMPI application for business customers, an authorized employee should hold relevant rights. This right is not a part of the package for accountants. In order to get this right, the member of the Board of the operator shall submit a Power of Attorney via the e-Tax Board in free format, in which he/she shall provide the list of authorized employees (first names, surnames, personal identification numbers, name of right) who should be provided with relevant rights.

Figure 4. Verification of restrictions by the operator (illustrative)

2. The authorized employee shall verify identity. Before verifying the restriction, the authorized employee should verify the identity of the customer on the basis of the identity document. Verification of identity should also be done in case of remote gambling.
3. The authorized employee shall verify the valid restriction. Verification of identity takes place on the basis of the personal identification number, and if a person does not have it, on the basis of the first name, surname, and date of birth. The operator shall enter the personal identification number to verify the existence of restriction, and if he/she is dealing with a foreign citizen, he/she shall enter the first name, surname, and date of birth of the person and press the **Verify** button. In the result, the operator will only see those restrictions, for which he/she is entitled to (also see [Table 2table 3](#)).
4. If there is a valid restriction for the customer, the operator must not allow the person to gamble. If there is no valid restriction, the operator can allow the person to gamble.

If no restrictions are displayed in the result of verification, the relevant message appears - *There are no valid restrictions on gambling for this person*. If the person has one or more restrictions, the application will show the list of valid restrictions on the screen. By pressing **Back** you will go back to the form for verifying the restrictions.

The screenshot shows a web interface titled "HAMPI piirangu andmed". Below the title, it says "Leitud on õnnemängu piirang!". There is a table with the following data:

Perekonnanimi	MAASIKAS
Eesnimed	MARI
Isikukood	48610066017

At the bottom of the table area, there is a blue button labeled "Tagasi".

Figure 5. Verification done by the operator - restrictions have been found (illustrative)

The screenshot shows a web interface titled "HAMPI piirangu andmed". Below the title, it says "Isikul puuduvad piirangud hasartmängude mängimiseks". There is a table with the following data:

Perekonnanimi	MAASIKAS
Eesnimed	MARI
Isikukood	48610066017

At the bottom of the table area, there is a blue button labeled "Tagasi".

Figure 6. Verification done by the operator - restrictions have not been found (illustrative)

7.2 Verifying restrictions via the X-Road data communication services

Restrictions can be verified by sending a query via the X-Road data communication services to the Estonian Tax and Customs Board (as a rule, it is an automatic communication between systems). There are two means for sending queries about the data in the list:

- In case of a single query, the system asks: "Does this person have restrictions on gambling?" Possible answers are "There are no restrictions" or "Yes, there are restrictions": [list of restrictions]" or "Error code".

- In case of a mass query, the system asks: "I need to know the valid restrictions". The list of all valid restrictions will appear.

The XML of the query in the X-Road consists of the header and the body. ~~The header has a standardized structure. In accordance with the RIA guidelines, the header consists of the following elements: institution, database, personal identification number, ID and name.~~

Header element	Type	Meaning
institution	string	Code of the institution in the Commercial Register or non-resident code, on behalf of which the services are consumed. For example: 12345678.
database	string	Name of the database. For example: emta.
personal identification number	string	Personal identification number of the person submitting the query (a natural entity), which is preceded by a two-digit country code. If the process is automated, the personal identification number of the owner of the process (a person who is in charge of the business process at the organisation). For example: EE37702026518.
id	string	Unique identifying number for service invocation. For _____ example: 8318c9e75932b97a43d4fe982d3317af1963939a8a9892c0c437
name	string	Name of the invocable service. For example: emta.OmpiKontrollV2.v1 or emta.OmpiKontrollV2.v1.

Table 2 Elements of the header (source: [RIA guidelines](#), page 8)

X-Road v6 compatible xml examples of the HAMPI requests and responses are shown further in this document.

The list of restrictions is buffered at the layer of application server. This means that the HAMPI queries are made against the buffer that is updated four times per day. Buffer will be updated in every 10 minutes-at:

05:00 UTC +00:00

09:00 UTC +00:00

15:00 UTC +00:00

21:00 UTC +00:00

Recently added restriction will appear in the output of the X-road query after the next update of the buffer.

7.2.1 Single query (X-Road data communication service emta.OmpiKontrollV2.v1)

There are two possible inputs for a single query:

- 1) personal identification number;
or
- 2) first name, surname and date of birth.

Input rules:

- If the person has Estonian personal identification number, the first option should be used. The second option is meant for those people who do not have Estonian personal identification number (as a rule, these are foreign persons).
- Either 1) or 2) can be filled in at a time. If both 1) and 2) are filled in at a time, the query will return an error.
- If 2) is used, all three elements must be filled in.

Example no. 1 of the single query input (emta.OmpiKontrollV2.v1) (with the personal identification number):

```
<?xml version="1.0" encoding="utf-8"?>
<SOAP-ENV:Envelope xmlns:SOAP-ENV="http://schemas.xmlsoap.org/soap/envelope/"
  xmlns:xrd="http://x-road.eu/xsd/xroad.xsd"
  xmlns:id="http://x-road.eu/xsd/identifiers">
  <SOAP-ENV:Header>
    <xrd:client id:objectType="SUBSYSTEM">
      <id:xRoadInstance>ee-dev</id:xRoadInstance>
      <id:memberClass>COM</id:memberClass>
      <id:memberCode>00000000</id:memberCode>
      <id:subsystemCode>hampi-client</id:subsystemCode>
    </xrd:client>
    <xrd:service id:objectType="SERVICE">
      <id:xRoadInstance>ee-dev</id:xRoadInstance>
      <id:memberClass>GOV</id:memberClass>
      <id:memberCode>70000349</id:memberCode>
      <id:subsystemCode>hampi</id:subsystemCode>
      <id:serviceCode>OmpiKontrollV2</id:serviceCode>
      <id:serviceVersion>v2</id:serviceVersion>
    </xrd:service>
    <xrd:userId>EE38001310000</xrd:userId>
    <xrd:id>4894e35d-bf0f-44a6-867a-8e51f1daa7e1</xrd:id>
    <xrd:protocolVersion>4.0</xrd:protocolVersion>
  </SOAP-ENV:Header>
  <SOAP-ENV:Body>
    <emta:OmpiKontrollV2 xmlns:emta="http://emta-v6.x-road.eu">
      <keha>
        <isikukood>4830418000318</isikukood>
      </keha>
    </emta:OmpiKontrollV2>
  </SOAP-ENV:Body>
</SOAP-ENV:Envelope>
```

```
<?xml version="1.0" encoding="UTF-8"?>
<env:Envelope xmlns:env="http://schemas.xmlsoap.org/soap/envelope/"
  xmlns:xtee="http://x-tee.riik.ee/xsd/xtee.xsd">
  <xtee:asutus>00000000</xtee:asutus>
  <xtee:andmekogu>emta</xtee:andmekogu>
  <xtee:isikukood>EE38001310000</xtee:isikukood>
  <xtee:id>123455</xtee:id>
  <xtee:nimi>emta.OmpiKontrollV2.v1</xtee:nimi>
</env:Header>
<env:Body>
  <emta:OmpiKontrollV2 xmlns:emta="http://producers.emta.xtee.riik.ee/producer/emta">
    <keha>
      <isikukood>4830418000318</isikukood>
    </keha>
  </emta:OmpiKontrollV2>
</env:Body>
```


</env:Envelope>

Example no. 2 of the single query input (emta.OmpiKontrollV2.v1) (without the personal identification number):

```
<?xml version="1.0" encoding="utf-8"?>
<SOAP-ENV:Envelope xmlns:SOAP-ENV="http://schemas.xmlsoap.org/soap/envelope/"
  xmlns:xrd="http://x-road.eu/xsd/xroad.xsd"
  xmlns:id="http://x-road.eu/xsd/identifiers">
  <SOAP-ENV:Header>
    <xrd:client id:objectType="SUBSYSTEM">
      <id:xRoadInstance>ee-dev</id:xRoadInstance>
      <id:memberClass>COM</id:memberClass>
      <id:memberCode>00000000</id:memberCode>
      <id:subsystemCode>hampi-client</id:subsystemCode>
    </xrd:client>
    <xrd:service id:objectType="SERVICE">
      <id:xRoadInstance>ee-dev</id:xRoadInstance>
      <id:memberClass>GOV</id:memberClass>
      <id:memberCode>70000349</id:memberCode>
      <id:subsystemCode>hampi</id:subsystemCode>
      <id:serviceCode>OmpiKontrollV2</id:serviceCode>
      <id:serviceVersion>v2</id:serviceVersion>
    </xrd:service>
    <xrd:userId>EE38001310000</xrd:userId>
    <xrd:id>4894e35d-bf0f-44a6-867a-8e51f1daa7e2</xrd:id>
    <xrd:protocolVersion>4.0</xrd:protocolVersion>
  </SOAP-ENV:Header>
  <SOAP-ENV:Body>
    <emta:OmpiKontrollV2 xmlns:emta="http://emta-v6.x-road.eu">
      <keha>
        <perenimi>STRAWBERRY</perenimi>
        <eesnimi>MARY</eesnimi>
        <synnikuupaev>1983-04-18</synnikuupaev>
      </keha>
    </emta:OmpiKontrollV2>
  </SOAP-ENV:Body>
</SOAP-ENV:Envelope>
```

```
<?xml version="1.0" encoding="UTF-8"?>
<env:Envelope xmlns:env="http://schemas.xmlsoap.org/soap/envelope/">
  <env:Header xmlns:xtee="http://x-tee.riik.ee/xsd/xtee.xsd">
    <xtee:asutus>00000000</xtee:asutus>
    <xtee:andmekogu>emta</xtee:andmekogu>
    <xtee:isikukood>EE38001310000</xtee:isikukood>
    <xtee:id>123456</xtee:id>
    <xtee:nimi>emta.OmpiKontrollV2.v1</xtee:nimi>
  </env:Header>
  <env:Body>
    <emta:OmpiKontrollV2 xmlns:emta="http://producers.emta.xtee.riik.ee/producer/emta">
      <keha>
        <perenimi>STRAWBERRY</perenimi>
        <eesnimi>MARY</eesnimi>
        <synnikuupaev>1983-04-18</synnikuupaev>
      </keha>
    </emta:OmpiKontrollV2>
  </env:Body>
</env:Envelope>
```

Possible outcomes of a single query:

- 0 → no restrictions
- 100 → restriction on games of chance (restriction registered before 01.01.2016)
- 101 → restriction on games of chance (restriction registered after 01.01.2016)
- 102 → toto restriction
- 103 → lottery restriction
- Validation error. Possible validation errors:
 - Either a personal identification number or a surname, a first name and a date of birth should be filled in.
 - All three elements should be filled in - surname, first name and date of birth.
 - Wrong personal identification number (the personal identification number in the header is verified).

If there are any problems in the system, a technical error can also be the outcome of the query.

- NB! If the person has more than one restriction, and the operator has the right to see more than one restriction, the output will also contain several codes, and each code will be displayed as a separate element.

The system of the Estonian Tax and Customs Board compares the permits held by the operator and the restrictions imposed on the person and prepares an output on the basis of the logic described below.

Permits held by the operator	Valid permits	Single query output (emta.OmpiKontrollV2.v1) that is sent by the system of the Estonian Tax and Customs Board to the operator
The operator only deals with games of chance	No restrictions	0
	Restriction on games of chance (set before 01.01.2016)	100
	Restriction on games of chance (set after 01.01.2016)	101
	Tote board restriction	0
	Lottery restriction	0
	Restriction on games of chance (< 01.01.2016) and toto	100
	Restriction on games of chance (< 01.01.2016) and lottery	100
	Restriction on games of chance (< 01.01.2016), lottery and toto	100
	Restriction on games of chance (>01.01.2016) and toto	101
	Restriction on games of chance (>01.01.2016) and lottery	101
	Restriction on games of chance (>01.01.2016), lottery and toto	101
The operator only deals with tolos	No restrictions	0
	Restriction on games of chance (set before 01.01.2016)	0
	Restriction on games of chance (set after 01.01.2016)	0
	Tote board restriction	102
	Lottery restriction	0

	Restriction on games of chance (< 01.01.2016) and toto	102
	Restriction on games of chance (< 01.01.2016) and lottery	0
	Restriction on games of chance (< 01.01.2016), lottery and toto	102
	Restriction on games of chance (>01.01.2016) and toto	102
	Restriction on games of chance (>01.01.2016) and lottery	0
	Restriction on games of chance (>01.01.2016), lottery and toto	102
The operator only deals with lotteries	No restrictions	0
	Restriction on games of chance (set before 01.01.2016)	0
	Restriction on games of chance (set after 01.01.2016)	0
	Tote board restriction	0
	Lottery restriction	103
	Restriction on games of chance (< 01.01.2016) and toto	0
	Restriction on games of chance (< 01.01.2016) and lottery	103
	Restriction on games of chance (< 01.01.2016), lottery and toto	103
	Restriction on games of chance (>01.01.2016) and toto	0
	Restriction on games of chance (>01.01.2016) and lottery	103
	Restriction on games of chance (>01.01.2016), lottery and toto	103
The operator deals with games of chance and toto	No restrictions	0
	Restriction on games of chance (set before 01.01.2016)	100
	Restriction on games of chance (set after 01.01.2016)	101
	Totalizator restriction	102
	Lottery restriction	0
	Restriction on games of chance (< 01.01.2016) and toto	100, 102
	Restriction on games of chance (< 01.01.2016) and lottery	100
	Restriction on games of chance (< 01.01.2016), lottery and toto	100, 102
	Restriction on games of chance (>01.01.2016) and toto	101, 102
	Restriction on games of chance (>01.01.2016) and lottery	101
	Restriction on games of chance (>01.01.2016), lottery and toto	101, 102
The operator only deals with games of chance and lotteries	No restrictions	0
	Restriction on games of chance (set before 01.01.2016)	100
	Restriction on games of chance (set after 01.01.2016)	101
	Tote board restriction	0
	Lottery restriction	103
	Restriction on games of chance (< 01.01.2016) and toto	100

	Restriction on games of chance (< 01.01.2016) and lottery	100, 103
	Restriction on games of chance (< 01.01.2016), lottery and toto	100, 103
	Restriction on games of chance (>01.01.2016) and toto	101
	Restriction on games of chance (>01.01.2016) and lottery	101, 103
	Restriction on games of chance (>01.01.2016), lottery and toto	101, 103
The operator deals with totos and lotteries	No restrictions	0
	Restriction on games of chance (set before 01.01.2016)	0
	Restriction on games of chance (set after 01.01.2016)	0
	Tote board restriction	102
	Lottery restriction	103
	Restriction on games of chance (< 01.01.2016) and toto	102
	Restriction on games of chance (< 01.01.2016) and lottery	103
	Restriction on games of chance (< 01.01.2016), lottery and toto	102, 103
	Restriction on games of chance (>01.01.2016) and toto	102
	Restriction on games of chance (>01.01.2016) and lottery	103
	Restriction on games of chance (>01.01.2016), lottery and toto	102, 103
The operator deals with games of chance, toto and lotteries	No restrictions	0
	Restriction on games of chance (set before 01.01.2016)	100
	Restriction on games of chance (set after 01.01.2016)	101
	Tote board restriction	102
	Lottery restriction	103
	Restriction on games of chance (< 01.01.2016) and toto	100, 102
	Restriction on games of chance (< 01.01.2016) and lottery	100, 103
	Restriction on games of chance (< 01.01.2016), lottery and toto	100, 102, 103
	Restriction on games of chance (>01.01.2016) and toto	101, 102
	Restriction on games of chance (>01.01.2016) and lottery	101, 103
	Restriction on games of chance (>01.01.2016), lottery and toto	101, 102, 103

Table 23 Permits held by the operator, restrictions set on the person, and the output displayed to the operator

Example no. 1 of the single query output (emta.OmpiKontrollV2.v1) (with the personal identification number):

```
<?xml version="1.0" encoding="utf-8"?>
<SOAP-ENV:Envelope xmlns:SOAP-ENV="http://schemas.xmlsoap.org/soap/envelope/"
  xmlns:xrd="http://x-road.eu/xsd/xroad.xsd"
  xmlns:id="http://x-road.eu/xsd/identifiers">
  <SOAP-ENV:Header>
    <xrd:client id:objectType="SUBSYSTEM">
```

```

        <id:xRoadInstance>ee-dev</id:xRoadInstance>
        <id:memberClass>COM</id:memberClass>
        <id:memberCode>00000000</id:memberCode>
        <id:subsystemCode>hampi-client</id:subsystemCode>
    </xrd:client>
    <xrd:service id:objectType="SERVICE">
        <id:xRoadInstance>ee-dev</id:xRoadInstance>
        <id:memberClass>GOV</id:memberClass>
        <id:memberCode>70000349</id:memberCode>
        <id:subsystemCode>hampi</id:subsystemCode>
        <id:serviceCode>OmpiKontrollV2</id:serviceCode>
        <id:serviceVersion>v2</id:serviceVersion>
    </xrd:service>
    <xrd:userId>EE38001310000</xrd:userId>
    <xrd:id>4894e35d-bf0f-44a6-867a-8e51f1daa7e1</xrd:id>
    <xrd:protocolVersion>4.0</xrd:protocolVersion>
    <xrd:requestHash algorithmId="http://www.w3.org/2001/04/xmlenc#sha512">
        a8c8ab3cb2ca214a5559bc43492cb95c</xrd:requestHash>
</SOAP-ENV:Header>
<SOAP-ENV:Body>
    <emta:OmpiKontrollV2Response xmlns:emta="http://emta-v6.x-road.eu">
        <paring>
            <isikukood>4830418000318</isikukood>
        </paring>
        <keha>
            <piirang>0</piirang>
        </keha>
    </emta:OmpiKontrollV2Response>
</SOAP-ENV:Body>
</SOAP-ENV:Envelope>

```

```

<?xml version="1.0" encoding="UTF-8"?>
<env:Envelope xmlns:env="http://schemas.xmlsoap.org/soap/envelope/">
  <env:Header xmlns:xtee="http://x-tee.riik.ee/xsd/xtee.xsd">
    <xtee:asutus>00000000</xtee:asutus>
    <xtee:andmekogu>emta</xtee:andmekogu>
    <xtee:isikukood>EE38001310000</xtee:isikukood>
    <xtee:id>123455</xtee:id>
    <xtee:nimi>emta.OmpiKontrollV2.v1</xtee:nimi>
  </env:Header>
  <env:Body>
    <emta:OmpiKontrollV2Response xmlns:emta="http://producers.emta.xtee.riik.ee/producer/emta">
      <paring>
        <isikukood>4830418000318</isikukood>
      </paring>
      <keha>
        <piirang>0</piirang>
      </keha>
    </emta:OmpiKontrollV2Response>
  </env:Body>
</env:Envelope>

```

Example no. 2 of the single query output (emta.OmpiKontrollV2.v1) (without the personal identification number):

```

<?xml version="1.0" encoding="utf-8"?>
<SOAP-ENV:Envelope xmlns:SOAP-ENV="http://schemas.xmlsoap.org/soap/envelope/"
  xmlns:xrd="http://x-road.eu/xsd/xroad.xsd"
  xmlns:id="http://x-road.eu/xsd/identifiers">
  <SOAP-ENV:Header>

```

```

<xrd:client id:objectType="SUBSYSTEM">
  <id:xRoadInstance>ee-dev</id:xRoadInstance>
  <id:memberClass>COM</id:memberClass>
  <id:memberCode>00000000</id:memberCode>
  <id:subsystemCode>hampi-client</id:subsystemCode>
</xrd:client>
<xrd:service id:objectType="SERVICE">
  <id:xRoadInstance>ee-dev</id:xRoadInstance>
  <id:memberClass>GOV</id:memberClass>
  <id:memberCode>70000349</id:memberCode>
  <id:subsystemCode>hampi</id:subsystemCode>
  <id:serviceCode>OmpiKontrollV2</id:serviceCode>
  <id:serviceVersion>v2</id:serviceVersion>
</xrd:service>
<xrd:userId>EE38001310000</xrd:userId>
<xrd:id>4894e35d-bf0f-44a6-867a-8e51f1daa7e2</xrd:id>
<xrd:protocolVersion>4.0</xrd:protocolVersion>
<xrd:requestHash algorithmId="http://www.w3.org/2001/04/xmlenc#sha512">
  a8c8ab3cb2ca214a5559bc43492cb95c</xrd:requestHash>
</SOAP-ENV:Header>
<SOAP-ENV:Body>
  <emta:OmpiKontrollV2Response xmlns:emta="http://emta-v6.x-road.eu">
    <paring>
      <perenimi>STRAWBERRY</perenimi>
      <eesnimi>MARY</eesnimi>
      <synnikuupaev>1983-04-18</synnikuupaev>
    </paring>
    <keha>
      <piirang>102</piirang>
      <piirang>103</piirang>
    </keha>
  </emta:OmpiKontrollV2Response>
</SOAP-ENV:Body>
</SOAP-ENV:Envelope>

```

```

<?xml version="1.0" encoding="UTF-8"?>
<env:Envelope xmlns:env="http://schemas.xmlsoap.org/soap/envelope/">
  <env:Header xmlns:xtee="http://x-tee.riik.ee/xsd/xtee.xsd">
    <xtee:asutus>00000000</xtee:asutus>
    <xtee:andmekogu>emta</xtee:andmekogu>
    <xtee:isikukood>EE38001310000</xtee:isikukood>
    <xtee:id>123456</xtee:id>
    <xtee:nimi>emta.OmpiKontrollV2.v1</xtee:nimi>
  </env:Header>
  <env:Body>
    <emta:OmpiKontrollV2Response xmlns:emta="http://producers.emta.xtee.riik.ee/producer/emta">
      <paring>
        <perenimi>STRAWBERRY</perenimi>
        <eesnimi>MARY</eesnimi>
        <synnikuupaev>1983-04-18</synnikuupaev>
      </paring>
      <keha>
        <piirang>102</piirang>
        <piirang>103</piirang>
      </keha>
    </emta:OmpiKontrollV2Response>
  </env:Body>
</env:Envelope>

```

Validation errors:

1. Either a personal identification number or a surname, a first name and a date of birth should be filled in.

```
<?xml version="1.0" encoding="utf-8"?>
<SOAP-ENV:Envelope xmlns:SOAP-ENV="http://schemas.xmlsoap.org/soap/envelope/"
  xmlns:xrd="http://x-road.eu/xsd/xroad.xsd"
  xmlns:id="http://x-road.eu/xsd/identifiers">
  <SOAP-ENV:Header>
    <xrd:client id:objectType="SUBSYSTEM">
      <id:xRoadInstance>ee-dev</id:xRoadInstance>
      <id:memberClass>COM</id:memberClass>
      <id:memberCode>00000000</id:memberCode>
      <id:subsystemCode>hampi-client</id:subsystemCode>
    </xrd:client>
    <xrd:service id:objectType="SERVICE">
      <id:xRoadInstance>ee-dev</id:xRoadInstance>
      <id:memberClass>GOV</id:memberClass>
      <id:memberCode>70000349</id:memberCode>
      <id:subsystemCode>hampi</id:subsystemCode>
      <id:serviceCode>OmpiKontrollV2</id:serviceCode>
      <id:serviceVersion>v2</id:serviceVersion>
    </xrd:service>
    <xrd:userId>EE38001310000</xrd:userId>
    <xrd:id>4894e35d-bf0f-44a6-867a-8e51f1daa7e3</xrd:id>
    <xrd:protocolVersion>4.0</xrd:protocolVersion>
  </SOAP-ENV:Header>
  <SOAP-ENV:Body>
    <SOAP-ENV:Fault>
      <faultcode>SOAP-ENV:Client</faultcode>
      <faultstring>
        Täidetud peab olema kas isikukood või perenimi, eesnimi ja sünnikuupäev
      </faultstring>
    </SOAP-ENV:Fault>
  </SOAP-ENV:Body>
</SOAP-ENV:Envelope>
```

```
<?xml version="1.0" encoding="UTF-8"?>
<env:Envelope xmlns:env="http://schemas.xmlsoap.org/soap/envelope/"
  xmlns:xtee="http://x-tee.riik.ee/xsd/xtee.xsd">
  <xtee:asutus>00000000</xtee:asutus>
  <xtee:andmekogu>emta</xtee:andmekogu>
  <xtee:isikukood>EE38001310000</xtee:isikukood>
  <xtee:id>123455</xtee:id>
  <xtee:nimi>emta.OmpiKontrollV2.v1</xtee:nimi>
</env:Header>
<env:Body>
  <env:Fault>
    <faultcode>env:Client</faultcode>
    <faultstring>Täidetud peab olema kas isikukood või perenimi, eesnimi ja sünnikuupäev</faultstring>
  </env:Fault>
</env:Body>
</env:Envelope>
```

2. All three elements should be filled in:

```
<?xml version="1.0" encoding="utf-8"?>
<SOAP-ENV:Envelope xmlns:SOAP-ENV="http://schemas.xmlsoap.org/soap/envelope/"
  xmlns:xrd="http://x-road.eu/xsd/xroad.xsd"
  xmlns:id="http://x-road.eu/xsd/identifiers">
  <SOAP-ENV:Header>
```

```

<xrd:client id:objectType="SUBSYSTEM">
  <id:xRoadInstance>ee-dev</id:xRoadInstance>
  <id:memberClass>COM</id:memberClass>
  <id:memberCode>00000000</id:memberCode>
  <id:subsystemCode>hampi-client</id:subsystemCode>
</xrd:client>
<xrd:service id:objectType="SERVICE">
  <id:xRoadInstance>ee-dev</id:xRoadInstance>
  <id:memberClass>GOV</id:memberClass>
  <id:memberCode>70000349</id:memberCode>
  <id:subsystemCode>hampi</id:subsystemCode>
  <id:serviceCode>OmpiKontrollV2</id:serviceCode>
  <id:serviceVersion>v2</id:serviceVersion>
</xrd:service>
<xrd:userId>EE38001310000</xrd:userId>
<xrd:id>4894e35d-bf0f-44a6-867a-8e51f1daa7e4</xrd:id>
<xrd:protocolVersion>4.0</xrd:protocolVersion>
</SOAP-ENV:Header>
<SOAP-ENV:Body>
  <SOAP-ENV:Fault>
    <faultcode>SOAP-ENV:Client</faultcode>
    <faultstring>
      Täidetud peavad olema kõik 3 elementi - perenimi, eesnimi ja sünnikuupäev
    </faultstring>
  </SOAP-ENV:Fault>
</SOAP-ENV:Body>
</SOAP-ENV:Envelope>

```

```

<?xml version="1.0" encoding="UTF-8"?>
<env:Envelope xmlns:env="http://schemas.xmlsoap.org/soap/envelope/">
  <env:Header xmlns:xtee="http://x-tee.riik.ee/xsd/xtee.xsd">
    <xtee:asutus>00000000</xtee:asutus>
    <xtee:andmekogu>emta</xtee:andmekogu>
    <xtee:isikukood>EE38001310000</xtee:isikukood>
    <xtee:id>123456</xtee:id>
    <xtee:nimi>emta.OmpiKontrollV2.v1</xtee:nimi>
  </env:Header>
  <env:Body>
    <env:Fault>
      <faultcode>env:Client</faultcode>
      <faultstring>Täidetud peavad olema kõik 3 elementi - perenimi, eesnimi ja sünnikuupäev</faultstring>
    </env:Fault>
  </env:Body>
</env:Envelope>

```

20.3. Error in the personal identification number

```

<?xml version="1.0" encoding="utf-8"?>
<SOAP-ENV:Envelope xmlns:SOAP-ENV="http://schemas.xmlsoap.org/soap/envelope/"
  xmlns:xrd="http://x-road.eu/xsd/xroad.xsd"
  xmlns:id="http://x-road.eu/xsd/identifiers">
  <SOAP-ENV:Header>
    <xrd:client id:objectType="SUBSYSTEM">
      <id:xRoadInstance>ee-dev</id:xRoadInstance>
      <id:memberClass>COM</id:memberClass>
      <id:memberCode>00000000</id:memberCode>
      <id:subsystemCode>hampi-client</id:subsystemCode>
    </xrd:client>
    <xrd:service id:objectType="SERVICE">
      <id:xRoadInstance>ee-dev</id:xRoadInstance>
      <id:memberClass>GOV</id:memberClass>
      <id:memberCode>70000349</id:memberCode>
    </xrd:service>
  </SOAP-ENV:Header>
  <SOAP-ENV:Body>
    <env:Fault>
      <faultcode>env:Client</faultcode>
      <faultstring>Täidetud peavad olema kõik 3 elementi - perenimi, eesnimi ja sünnikuupäev</faultstring>
    </env:Fault>
  </SOAP-ENV:Body>
</SOAP-ENV:Envelope>

```



```

        <id:subsystemCode>hampi</id:subsystemCode>
        <id:serviceCode>OmpiKontrollV2</id:serviceCode>
        <id:serviceVersion>v2</id:serviceVersion>
    </xrd:service>
    <xrd:userId>EE38001310000</xrd:userId>
    <xrd:id>4894e35d-bf0f-44a6-867a-8e51f1daa7e5</xrd:id>
    <xrd:protocolVersion>4.0</xrd:protocolVersion>
</SOAP-ENV:Header>
<SOAP-ENV:Body>
    <SOAP-ENV:Fault>
        <faultcode>SOAP-ENV:Client</faultcode>
        <faultstring>Vigane isikukood</faultstring>
    </SOAP-ENV:Fault>
</SOAP-ENV:Body>
</SOAP-ENV:Envelope>

```

```

<?xml version="1.0" encoding="UTF-8"?>
<env:Envelope xmlns:env="http://schemas.xmlsoap.org/soap/envelope/">
  <env:Header xmlns:xtee="http://x-tee.riik.ee/xsd/xtee.xsd">
    <xtee:asutus>00000000</xtee:asutus>
    <xtee:andmekogu>emta</xtee:andmekogu>
    <xtee:isikukood>EE38001310000</xtee:isikukood>
    <xtee:id>123458</xtee:id>
    <xtee:nimi>emta.OmpiKontrollV2.v1</xtee:nimi>
  </env:Header>
  <env:Body>
    <env:Fault>
      <faultcode>env:Client</faultcode>
      <faultstring>Vigane isikukood</faultstring>
    </env:Fault>
  </env:Body>
</env:Envelope>

```

7.2.197.2.2 Mass query (X-Road data communication service emta.OmpiAndmedV2.v1)

NB! Unlike the mass query version that is currently in use (it will be in use until 31 December 2015), the new mass query input no longer contains ID, and the mass query output no longer contains the end of restriction. The personal identification number is only displayed in the query output in case of Estonian citizens. Proceeding from the changes in the legislation, the restrictions registered after 1 January 2016 will no longer become invalid by default after their term expires. According to the new logic, if the restriction is registered in the system, it can only be regarded as invalid by annulling them (a person can do it himself/herself, or an official does it on the basis of the application submitted by the person). The restrictions on games of chance registered before 1 January 2016 shall expire by default when their term expires.

The example of the input for mass entry is below, and the system of the Estonian Tax and Customs Board sends a list of all valid restrictions (that the operator is entitled to see) in reply to the query.

Input example of mass query (emta.OmpiAndmedV2.v1):

```

<?xml version="1.0" encoding="utf-8"?>
<SOAP-ENV:Envelope xmlns:SOAP-ENV="http://schemas.xmlsoap.org/soap/envelope/"
  xmlns:xrd="http://x-road.eu/xsd/xroad.xsd"

```

```

    xmlns:id="http://x-road.eu/xsd/identifiers">
<SOAP-ENV:Header>
  <xrd:client id:objectType="SUBSYSTEM">
    <id:xRoadInstance>ee-dev</id:xRoadInstance>
    <id:memberClass>COM</id:memberClass>
    <id:memberCode>00000000</id:memberCode>
    <id:subsystemCode>hampi-client</id:subsystemCode>
  </xrd:client>
  <xrd:service id:objectType="SERVICE">
    <id:xRoadInstance>ee-dev</id:xRoadInstance>
    <id:memberClass>GOV</id:memberClass>
    <id:memberCode>70000349</id:memberCode>
    <id:subsystemCode>hampi</id:subsystemCode>
    <id:serviceCode>OmpiAndmedV2</id:serviceCode>
    <id:serviceVersion>v2</id:serviceVersion>
  </xrd:service>
  <xrd:userId>EE38001310000</xrd:userId>
  <xrd:id>4894e35d-bf0f-44a6-867a-8e51f1daa7e6</xrd:id>
  <xrd:protocolVersion>4.0</xrd:protocolVersion>
</SOAP-ENV:Header>
<SOAP-ENV:Body>
  <emta:OmpiAndmedV2 xmlns:emta="http://emta-v6.x-road.eu">
    <keha/>
  </emta:OmpiAndmedV2>
</SOAP-ENV:Body>
</SOAP-ENV:Envelope>

```

```

<?xml version="1.0" encoding="UTF-8"?>
<env:Envelope xmlns:env="http://schemas.xmlsoap.org/soap/envelope/">
  <env:Header xmlns:xtee="http://x-tee.riik.ee/xsd/xtee.xsd">
    <xtee:asutus>00000000</xtee:asutus>
    <xtee:andmekogu>emta</xtee:andmekogu>
    <xtee:isikukood>EE38001310000</xtee:isikukood>
    <xtee:id>123455</xtee:id>
    <xtee:nimi>emta.OmpiAndmedV2.v1</xtee:nimi>
  </env:Header>
  <env:Body>
    <emta:OmpiAndmedV2 xmlns:emta="http://producers.emta.xtee.riik.ee/producer/emta">
      <keha/>
    </emta:OmpiAndmedV2>
  </env:Body>
</env:Envelope>

```

The output consists of two parts:

- 1) Persons with the personal identification number - for each restriction, there is a personal identification number and a restriction number in the output.
- 2) Persons without the personal identification number, or foreigners - the element contains the persons who have been registered in the list on the basis of the first name, the surname and a date of birth. For each restriction, the output contains a first name, a surname, a date of birth, and a restriction code (100, 101, 102 or 103).

Rules:

- From the point of view of data actuality, it is required that the operators who use the emta.OmpiAndmedV2.v1 service after 1 January 2016 would submit queries about all

valid restrictions once again on a regular basis. The mass query must be launched at least one time a day (preferably two times a day).

- In case of mass queries, the logic described in chapter 7.2.1 [Table 2](#) also applies (only the restrictions that the operator is entitled to see are displayed to the organiser).

Output example of the mass query (emta.OmpiAndmedV2.v1):

```
<?xml version="1.0" encoding="utf-8"?>
<SOAP-ENV:Envelope xmlns:SOAP-ENV="http://schemas.xmlsoap.org/soap/envelope/"
  xmlns:xrd="http://x-road.eu/xsd/xroad.xsd"
  xmlns:id="http://x-road.eu/xsd/identifiers">
  <SOAP-ENV:Header>
    <xrd:client id:objectType="SUBSYSTEM">
      <id:xRoadInstance>ee-dev</id:xRoadInstance>
      <id:memberClass>COM</id:memberClass>
      <id:memberCode>00000000</id:memberCode>
      <id:subsystemCode>hampi-client</id:subsystemCode>
    </xrd:client>
    <xrd:service id:objectType="SERVICE">
      <id:xRoadInstance>ee-dev</id:xRoadInstance>
      <id:memberClass>GOV</id:memberClass>
      <id:memberCode>70000349</id:memberCode>
      <id:subsystemCode>hampi</id:subsystemCode>
      <id:serviceCode>OmpiAndmedV2</id:serviceCode>
      <id:serviceVersion>v2</id:serviceVersion>
    </xrd:service>
    <xrd:userId>EE38001310000</xrd:userId>
    <xrd:id>4894e35d-bf0f-44a6-867a-8e51f1daa7e6</xrd:id>
    <xrd:protocolVersion>4.0</xrd:protocolVersion>
    <xrd:requestHash algorithmId="http://www.w3.org/2001/04/xmlenc#sha512">
      a8c8ab3cb2ca214a5559bc43492cb95c</xrd:requestHash>
  </SOAP-ENV:Header>
  <SOAP-ENV:Body>
    <emta:OmpiAndmedV2Response xmlns:emta="http://emta-v6.x-road.eu">
      <paring/>
      <keha>
        <isikukoodiga>
          <isik>
            <isikukood>4830418000318</isikukood>
            <piirang>100</piirang>
          </isik>
          <isik>
            <isikukood>4830418000319</isikukood>
            <piirang>102</piirang>
            <piirang>103</piirang>
          </isik>
        </isikukoodiga>
        <isikukoodita>
          <isik>
            <perenimi>STRAWBERRY</perenimi>
            <eesnimi>MARY</eesnimi>
            <synnikuupaev>1983-04-18</synnikuupaev>
            <piirang>100</piirang>
            <piirang>101</piirang>
          </isik>
          <isik>
            <perenimi>POPPINS</perenimi>
            <eesnimi>MARY</eesnimi>
            <synnikuupaev>1963-01-28</synnikuupaev>
          </isik>
        </isikukoodita>
      </emta:OmpiAndmedV2Response>
    </SOAP-ENV:Body>
  </SOAP-ENV:Envelope>
```

```

        <piirang>100</piirang>
      </isik>
    </isikukoodita>
  </keha>
</emta:OmpiAndmedV2Response>
</SOAP-ENV:Body>
</SOAP-ENV:Envelope>

```

```

<?xml version="1.0" encoding="UTF-8"?>
<env:Envelope xmlns:env="http://schemas.xmlsoap.org/soap/envelope/">
  <env:Header xmlns:xtee="http://x-tee.riik.ee/xsd/xtee.xsd">
    <xtee:asutus>00000000</xtee:asutus>
    <xtee:andmekogu>emta</xtee:andmekogu>
    <xtee:isikukood>EE38001310000</xtee:isikukood>
    <xtee:id>123455</xtee:id>
    <xtee:nimi>emta.OmpiAndmedV2.v1</xtee:nimi>
  </env:Header>
  <env:Body>
    <emta:OmpiAndmedV2Response xmlns:emta="http://producers.emta.xtee.riik.ee/producer/emta">
      <paring/>
      <keha>
        <isikukoodiga>
          <isik>
            <isikukood>4830418000318</isikukood>
            <piirang>100</piirang>
          </isik>
          <isik>
            <isikukood>4830418000319</isikukood>
            <piirang>102</piirang>
            <piirang>103</piirang>
          </isik>
        </isikukoodiga>
        <isikukoodita>
          <isik>
            <perenimi>STRAWBERRY</perenimi>
            <eesnimi>MARY</eesnimi>
            <synnikuupaev>1983-04-18</synnikuupaev>
            <piirang>100</piirang>
            <piirang>101</piirang>
          </isik>
          <isik>
            <perenimi>POPPINS</perenimi>
            <eesnimi>MARY</eesnimi>
            <synnikuupaev>1963-01-28</synnikuupaev>
            <piirang>100</piirang>
          </isik>
        </isikukoodita>
      </keha>
    </emta:OmpiAndmedV2Response>
  </env:Body>
</env:Envelope>

```